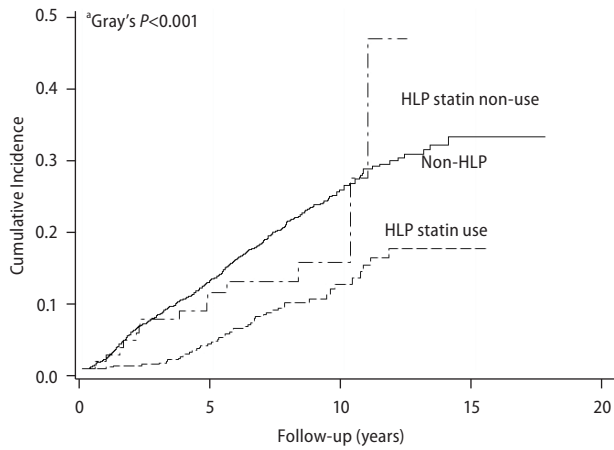


A The effects of DM with and without metformin for HCC risk after excluding 78 IFN failed patients who experienced retreatment with DAAs

Groups		BL	1Y	3Y	5Y	8Y	10Y	^b Crude SHR (95% CI) P-value	^{b*} Adjusted SHR (95% CI) P-value
DM	No. at risk	284	272	229	170	72	20		
metformin non-use	Cumulative Incidence (%)		2.5	12.0	16.7	27.1	28.0	1.53 (1.17-2.00) P=0.002	1.50 (1.13-1.98) P=0.005
DM	No. at risk	326	326	320	292	189	93		
metformin use	Cumulative Incidence (%)		0	0.6	3.2	12.8	19.7	0.82 (0.63-1.07) P=0.134	0.95 (0.73-1.25) P=0.729
Non-DM	No. at risk	2,091	2,029	1,853	1,420	683	261		
	Cumulative Incidence (%)		1.6	6.6	11.3	17.9	21.7	1	1

Supplementary Figure 3. The impact of DM with and without metformin (A) and HLP with and without statin (B) on the new-onset HCC among CHC patients who failed IFN therapy and did not subsequently receive DAAs treatment (n=2,701). (A) ^aAfter considering death as a competing risk, a Kaplan–Meier plot was constructed using Gray’s cumulative incidence method. ^bAll SHRs (95% CIs) and P-values were calculated using the Cox sub-distribution hazards method. *Adjusted for age, sex, LC, HCV GT1, HCV RNA, aspirin, and HLP/statin. DM, diabetes mellitus; HLP, hyperlipidemia; HCC, hepatocellular carcinoma; SHR, sub-distribution hazard ratio; LC, liver cirrhosis; GT, genotype. (B) ^aAfter considering death as a competing risk, a Kaplan–Meier plot was constructed using Gray’s cumulative incidence method. ^bAll SHRs (95% CIs) and P-values were calculated using the Cox sub-distribution hazards method. *Adjusted for age, sex, LC, HCV GT1, HCV RNA, aspirin, and DM/metformin. DM, diabetes mellitus; HLP, hyperlipidemia; HCC, hepatocellular carcinoma; SHR, sub-distribution hazard ratio; LC, liver cirrhosis; GT, genotype.



B The effects of HLP with and without statin for HCC risk after excluding 78 IFN failed patients who experienced retreatment with DAAs

Groups		BL	1Y	3Y	5Y	8Y	10Y	^b Crude SHR (95% CI) <i>P</i> -value	^{b*} Adjusted SHR (95% CI) <i>P</i> -value
HLP statin non-use	No. at risk	101	98	90	59	32.0	7	0.75 (0.44-1.28) <i>P</i> =0.296	0.70 (0.41-1.18) <i>P</i> =0.181
	Cumulative Incidence (%)		2.0	6.9	10.6	12.1	14.8		
HLP statin use	No. at risk	485	485	474	417	236	108	0.41 (0.31-0.55) <i>P</i> <0.001	0.45 (0.33-0.60) <i>P</i> <0.001
	Cumulative Incidence (%)		0.2	0.8	3.7	9.2	11.7		
Non-HLP	No. at risk	2,115	2,044	1,838	1,406	676	257	1	1
	Cumulative Incidence (%)		1.8	7.7	12.5	20.7	25.5		

Supplementary Figure 3. Continued