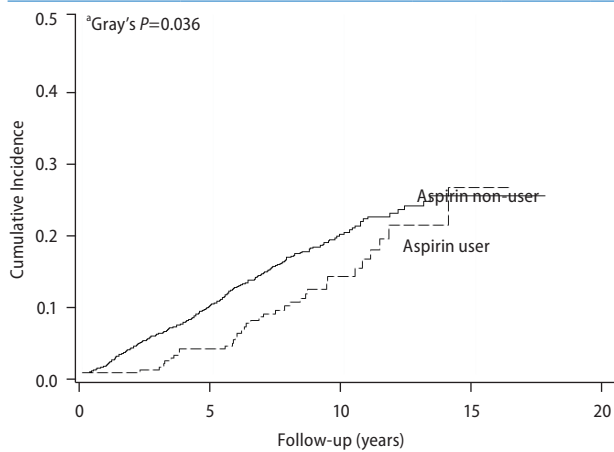


A All population

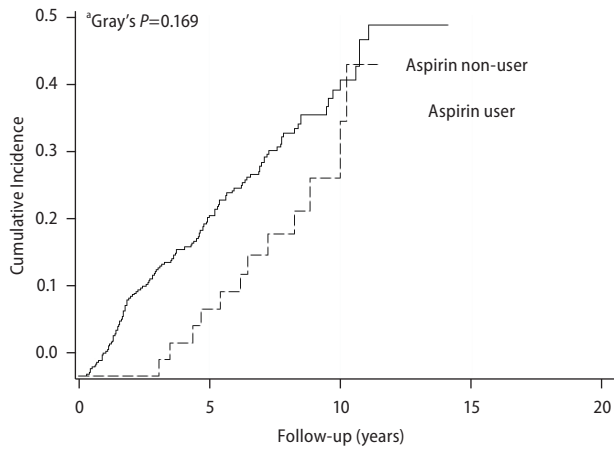
Groups		BL	1Y	3Y	5Y	8Y	10Y	^b Crude SHR (95% CI) <i>P</i> -value	^{b*} Adjusted SHR (95% CI) <i>P</i> -value
Aspirin non-use	No. at risk	2,490	2,416	2,189	1,667	779	293	1	1
	Cumulative Incidence (%)		1.6	7	11.6	19.1	23.1		
Aspirin use	No. at risk	289	289	285	265	178	81	0.68 (0.50-0.91) <i>P</i> =0.009	0.68 (0.50-0.91) <i>P</i> =0.009
	Cumulative Incidence (%)		0	0.7	4.2	11.3	16.4		



B Non-LC

Groups		BL	1Y	3Y	5Y	8Y	10Y	^b Crude SHR (95% CI) <i>P</i> -value	^{b*} Adjusted SHR (95% CI) <i>P</i> -value
Aspirin non-use	No. at risk	2,082	2,033	1,879	1,448	682	263	1	1
	Cumulative Incidence (%)		1.3	5.5	9.5	16.2	19.5		
Aspirin use	No. at risk	246	246	242	227	157	76	0.69 (0.49-0.98) <i>P</i> =0.037	0.76 (0.53-1.08) <i>P</i> =0.122
	Cumulative Incidence (%)		0	0.8	3.3	9.8	13.4		

Supplementary Figure 1. The impact of aspirin on the incidence of HCC among all population (A), the subgroups of non-LC (B) and LC (C). (A) ^aAfter considering death as a competing risk, a Kaplan–Meier plot was constructed using Gray’s cumulative incidence method. ^bAll SHRs (95% CIs) and *P*-values were calculated using the Cox sub-distribution hazards method. *Adjusted for age, sex, LC, HCV GT1, HCV RNA, DM/metformin and HLP/statin. DM, diabetes mellitus; HLP, hyperlipidemia; HCC, hepatocellular carcinoma; SHR, sub-distribution hazard ratio; LC, liver cirrhosis; GT, genotype. (B, C) ^aAfter considering death as a competing risk, a Kaplan–Meier plot was constructed using Gray’s cumulative incidence method. ^bAll SHRs (95% CIs) and *P*-values were calculated using the Cox sub-distribution hazards method. *Adjusted for age, sex, HCV GT1, HCV RNA, DM/metformin and HLP/statin. DM, diabetes mellitus; HLP, hyperlipidemia; HCC, hepatocellular carcinoma; SHR, sub-distribution hazard ratio; GT, genotype.



C LC

Groups		BL	1Y	3Y	5Y	8Y	10Y	^b Crude SHR (95% CI) <i>P</i> -value	^{b*} Adjusted SHR (95% CI) <i>P</i> -value
Aspirin non-use	No. at risk	408	383	311	220	98	30	1	1
	Cumulative Incidence (%)		3.2	14.7	22.3	33.8	41.1		
Aspirin use	No. at risk	43	43	43	39	22	6	0.67 (0.39-1.16) <i>P</i> =0.153	0.68 (0.39-1.18) <i>P</i> =0.167
	Cumulative Incidence (%)		0	0	9.3	19.7	35.4		

Supplementary Figure 1. Continued