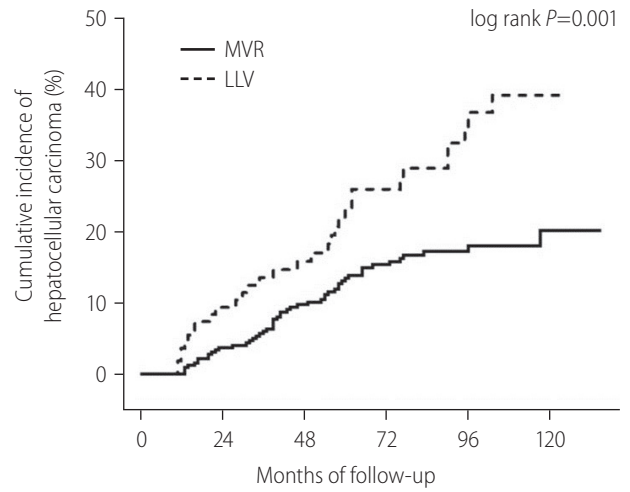


Number at risk

A

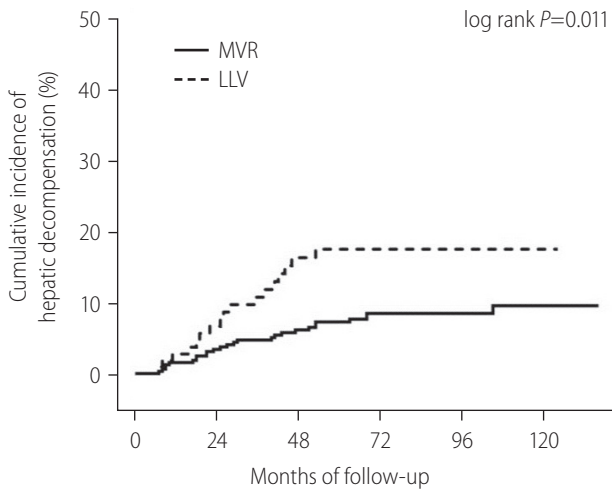
MVR	330	311	272	224	119	31
LLV	110	98	79	57	33	5



Number at risk

B

MVR	330	301	254	197	103	26
LLV	110	89	70	52	28	5



Number at risk

C

MVR	330	301	259	208	110	30
LLV	110	93	71	54	31	5

Supplementary Figure 3. Cumulative incidence of liver-related death or transplantation, HCC, and hepatic decompensation in cirrhotic subcohort (n=440). (A) Cumulative incidence of liver-related death or transplantation according to MVR vs. LLV. (B) Cumulative incidence of HCC according to MVR vs. LLV. (C) Cumulative incidence of hepatic decompensation according to MVR vs. LLV. MVR, maintained virologic response; LLV, low-level viremia; HCC, hepatocellular carcinoma.